



PAUL R. LEPAGE
GOVERNOR

STATE OF MAINE
DEPARTMENT OF AGRICULTURE, CON
LAND USE PLANNING CO
106 HOGAN ROAD, SUITE 8
BANGOR, MAINE 04416

Exhibit 5,B
Submittals during site visit.

WALTER E. WHITCOMB
COMMISSIONER

NICHOLAS D. LIVESAY
EXECUTIVE DIRECTOR

Memorandum

To: Commission Members

From: Karen E. Bolstridge, Downeast Regional Representative, Permitting and Compliance *KEB*

Date: July 17, 2014

Re: Site visit for Development Permit application DP 4944, Big Lake Township, Washington County, Maine.

Revised

Site Visit: August 12, 2014 at 5:00 p.m.
Meet at the end of the access road to the Princeton Municipal Airport off West Street (see attached maps for meeting location and stops).

On Tuesday, August 12, 2014, a site visit will be conducted to view the proposed development site and the surrounding area. The site visit is for the members of the Land Use Planning Commission, although the public may attend in their own vehicle(s). Those participating in the site visit will meet at 5:00 PM at the end of the access road to the Princeton Municipal Airport off West Street. Copies of the itinerary will be available from LUPC staff at the start of the site visit. The Commission Chair, however, may at any time alter the itinerary of the site visit in order to make it more efficient and effective.

Stop #1: Proposed site of the Utility Facility with a 250-foot lattice-style telecommunications tower, access road and other associated appurtenances. Please pull into the site or park safely on the correct side of West Street.

Stop #2: Neighboring Farms. Please park safely on the correct side of West Street.

Parked on Randall's property per summons.

Stop #3: Residential neighborhood on Big Lake. Please park at the Sunrise Church parking lot.

** See Addendum.*

Members of the public must provide their own transportation. The purpose of the site visit is to provide an opportunity for the LUPC Commissioners to view the project area, locations of project features and other points of interest. The public may attend for informational purposes only, but the site visit is not an opportunity to address the Commissioners with respect to any current project or any that may come before the Commission – see discussion below. The Commission will receive public testimony on the proposal during the public hearing on the following day, Wednesday, August 13, 2014.

Communications with Commission Members

Members of the Commission are appointed to sit on the Commission because they reside in, work in, or have special knowledge of the Commission's jurisdiction, and because of their interests in serving the communities within the jurisdiction. For these reasons, the members have a strong interest in maintaining a personal presence in the jurisdiction. However, representatives of the applicant and members of the public should be aware that there are legal restrictions on contact with Commission members. There must be no discussion between representatives of the applicant or members of the public and the Commission regarding any current project or any project that may come before the Commission. Such discussions should occur during a public meeting, such as the scheduled public hearing.

Communications with Commission Staff

During the site visit, representatives of U.S. Cellular and LUPC staff may point out various features and locations relevant to the proposal, and site-specific questions for clarification may be asked by Commission members and other attendees. Commissioners, members of the public, and U.S. Cellular representatives may speak directly to LUPC staff with questions or comments about the project. Staff will then follow up as appropriate.

Any questions or comments regarding the site visit should be directed to Karen Bolstridge at 207-941-4052 or via e-mail at: karen.bolstridge@maine.gov.

Addendum:

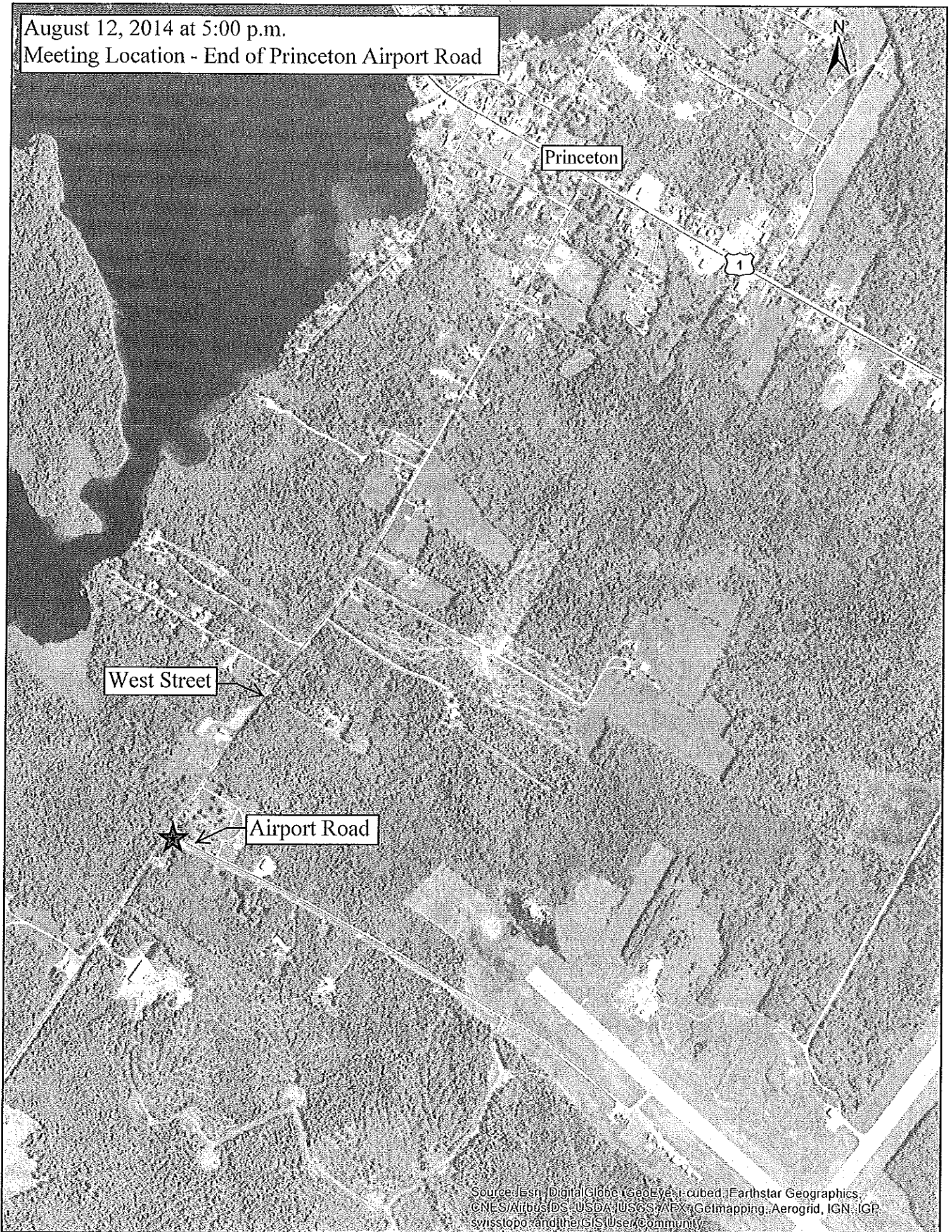
Site #4: Abutting Princeton Property.

Questions asked:

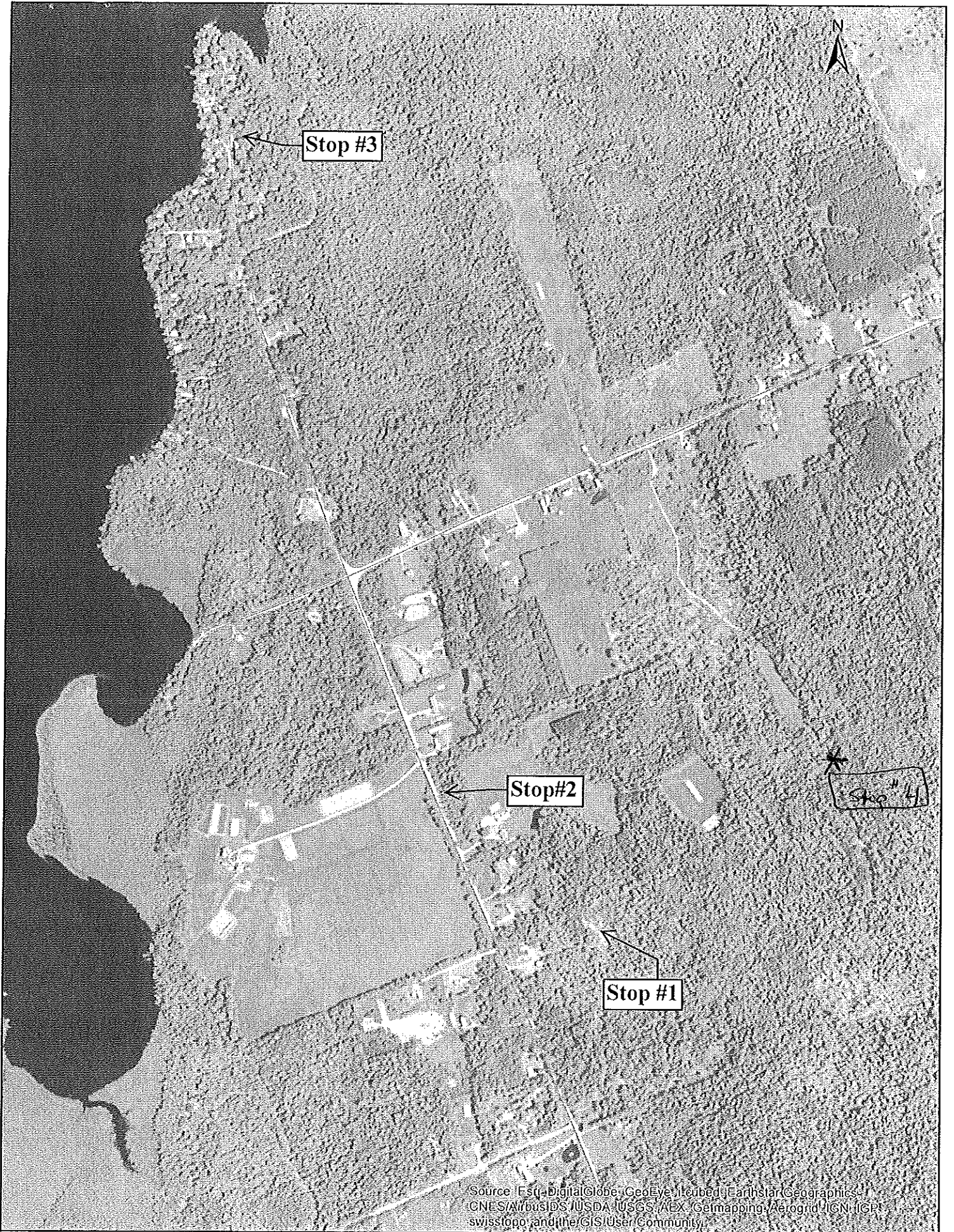
1) Are there any lighted 250' structures in the area that could be viewed by the Commission?

2) Site #4 - Elevation differences between the site and the cell tower site.

August 12, 2014 at 5:00 p.m.
Meeting Location - End of Princeton Airport Road



Source: Esri, DigitalGlobe, GeoEye, i-cubed, Earthstar Geographics,
CNES/Airbus DS, USDA, USGS, AeroGRID, IGN, IGP,
swisstopo, and the GIS User Community



Source: Esri, DigitalGlobe, GeoEye, iCubed, Earthstar, GeoGraphics, CNES/Airbus DS, USDA, USGS, AeroGRID, IGN, IGP, swissfoto, and the GIS User Community.